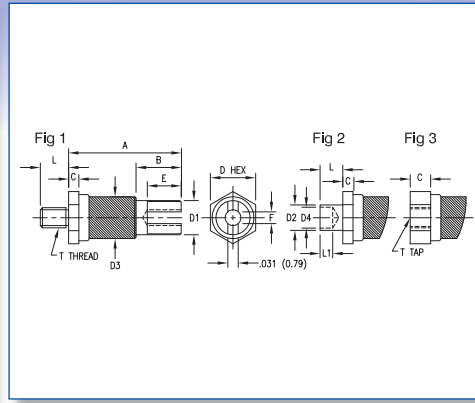
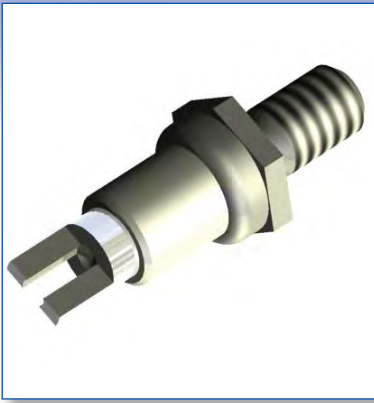


SOLDER TERMINALS - CERAMIC INSULATED, STAND OFF



Dimensions in inches (mm)
See page 94 for recommended Anvil and Punch

How to order code

570 - 2XXX - XX - XX - 00

Basic Part No. ↓

Terminal Finish ↓

Material Code Table		
Component	Material	RoHS
Insulator	Ceramic	✓
Mounting Stud	Brass	✓
Terminal	Brass	✓

Finish Code Table			
Dash No.	Terminal Finish	Mtg. Stud Finish	RoHS
-01	Silver	Cadmium	X
-05	Electro-Solder		
-21	Silver	Nickel	✓

Fig.	Basic Part No.	L	Board Thickness	A	B	C	D	D1	D2	D3	D4	E	F	L1	T	IR (VRMS)		
1	570-2430	-01	.250 (6.35)	-	.522 (13.26)	.192 (4.88)	.046 (1.17)	.250 (6.35)	.141 (3.58)	-	.187 (4.75)	-	.130 (3.30)	.046 (1.17)	-	4-40	2500	
		-02	.375 (9.53)	-	.522 (13.26)	.192 (4.88)	.046 (1.17)	.250 (6.35)	.141 (3.58)	-	.187 (4.75)	-	.130 (3.30)	.046 (1.17)	-	4-40	2500	
1	570-2382	-01	.250 (6.35)	-	.561 (14.25)	.218 (5.54)	.062 (1.57)	.312 (7.92)	.156 (3.96)	-	.245 (6.22)	-	.156 (3.96)	.040 (1.02)	-	6-32	4000	
		-02	.375 (9.53)	-	.561 (14.25)	.218 (5.54)	.062 (1.57)	.312 (7.92)	.156 (3.96)	-	.245 (6.22)	-	.156 (3.96)	.040 (1.02)	-	6-32	4000	
2	570-2431	-01	.062 (1.57)	.031 (0.79)	.522 (13.26)	.192 (4.88)	.046 (1.17)	.250 (6.35)	.141 (3.58)	.141 (3.58)	.187 (4.75)	.116 (2.95)	.130 (3.30)	.046 (1.17)	.062 (1.57)	-	2500	
		-02	.094 (2.39)	.062 (1.57)	.522 (13.26)	.192 (4.88)	.046 (1.17)	.250 (6.35)	.141 (3.58)	.141 (3.58)	.187 (4.75)	.116 (2.95)	.130 (3.30)	.046 (1.17)	.062 (1.57)	-	2500	
		-03	.105 (2.67)	.078 (1.98)	.522 (13.26)	.192 (4.88)	.046 (1.17)	.250 (6.35)	.141 (3.58)	.141 (3.58)	.187 (4.75)	.116 (2.95)	.130 (3.30)	.046 (1.17)	.093 (2.36)	-	2500	
		-04	.125 (3.18)	.094 (2.39)	.522 (13.26)	.192 (4.88)	.046 (1.17)	.250 (6.35)	.141 (3.58)	.141 (3.58)	.187 (4.75)	.116 (2.95)	.130 (3.30)	.046 (1.17)	.109 (2.77)	-	2500	
		-05	.156 (3.96)	.125 (3.18)	.522 (13.26)	.192 (4.88)	.046 (1.17)	.250 (6.35)	.141 (3.58)	.141 (3.58)	.187 (4.75)	.116 (2.95)	.130 (3.30)	.046 (1.17)	.109 (2.77)	-	2500	
	2	570-2383	-01	.062 (1.57)	.031 (0.79)	.561 (14.25)	.218 (5.54)	.062 (1.57)	.312 (7.92)	.156 (3.96)	.187 (4.75)	.245 (6.22)	.154 (3.91)	.156 (3.96)	.040 (1.02)	.062 (1.57)	-	4000
			-02	.094 (2.39)	.062 (1.57)	.561 (14.25)	.218 (5.54)	.062 (1.57)	.312 (7.92)	.156 (3.96)	.187 (4.75)	.245 (6.22)	.154 (3.91)	.156 (3.96)	.040 (1.02)	.062 (1.57)	-	4000
			-03	.105 (2.67)	.078 (1.98)	.561 (14.25)	.218 (5.54)	.062 (1.57)	.312 (7.92)	.156 (3.96)	.187 (4.75)	.245 (6.22)	.154 (3.91)	.156 (3.96)	.040 (1.02)	.093 (2.36)	-	4000
			-04	.125 (3.18)	.094 (2.39)	.561 (14.25)	.218 (5.54)	.062 (1.57)	.312 (7.92)	.156 (3.96)	.187 (4.75)	.245 (6.22)	.154 (3.91)	.156 (3.96)	.040 (1.02)	.109 (2.77)	-	4000
			-05	.156 (3.96)	.125 (3.18)	.561 (14.25)	.218 (5.54)	.062 (1.57)	.312 (7.92)	.156 (3.96)	.187 (4.75)	.245 (6.22)	.154 (3.91)	.156 (3.96)	.040 (1.02)	.109 (2.77)	-	4000
3	570-2432	-01	-	-	.601 (15.27)	.192 (4.88)	.125 (3.18)	.250 (6.35)	.141 (3.58)	-	.187 (4.75)	-	.130 (3.30)	.046 (1.17)	-	4-40	2500	
		-02	-	-	.601 (15.27)	.192 (4.88)	.125 (3.18)	.250 (6.35)	.141 (3.58)	-	.187 (4.75)	-	.130 (3.30)	.046 (1.17)	-	6-32	2500	
3	570-2384	-01	-	-	.624 (15.85)	.218 (5.54)	.062 (1.57)	.312 (7.92)	.156 (3.96)	-	.245 (6.22)	-	.156 (3.96)	.040 (1.02)	-	4-40	4000	
		-02	-	-	.624 (15.85)	.218 (5.54)	.062 (1.57)	.312 (7.92)	.156 (3.96)	-	.245 (6.22)	-	.156 (3.96)	.040 (1.02)	-	6-32	4000	